

**East Midlands Gateway  
Phase 2 (EMG2)**

**Document DCO 6.8C/MCO 6.8C**

ENVIRONMENTAL STATEMENT

**Technical Appendices**

Appendix 8C

# Modelled Human Receptor Locations

April 2026

08

The East Midlands Gateway Phase 2  
and Highway Order 202X and The East Midlands Gateway  
Rail Freight and Highway (Amendment) Order 202X

[SEGRO.COM/SLPEMG2](https://www.segro.com/slpemg2)

**SEGRO**

**The East Midlands Gateway Phase 2 and  
Highway Order 202X and the East Midlands Gateway  
Rail Freight and Highway (Amendment) Order 202X**

**APPENDIX 8C – MODELLED HUMAN RECEPTOR  
LOCATIONS**

**(DOCUMENT DCO 6.8C/MCO 6.8C)**

<b>Version</b>	<b>Date</b>	<b>Status of Version</b>
0	October 2025	Submission
1	April 2026	Deadline 3

## Appendix 8c – Human Receptor Locations

Table 8c.1: Residential Receptor Locations

Receptor ID	X	Y	Z
AB.R1	443844.6	322800.5	1.5
AB.R2	442049.4	324392.3	1.5
AB.R3	442357.5	324984.7	1.5
AB.R4	442438.8	325143.3	1.5
AB.R5	442522	325145.5	1.5
AB.R6	442548.6	325146.9	1.5
AB.R7	442932.6	325363.4	1.5
AB.R8	443638.4	325396.3	1.5
AB.R9	445305.3	325264.6	1.5
AB.R10	446283.2	323893.3	1.5
AB.R11	441896.6	325176.7	1.5
AB.R12	444617.2	324569.6	1.5
AB.R13	445322.4	324658.9	1.5
AB.R14	445339.5	324633.8	1.5
AB.R15	445348.8	324609.7	1.5
AB.R16	445317.6	324537.1	1.5
AB.R17	445316.1	324459.5	1.5
AB.R18	445245.3	324203	1.5
AB.R19	445194.2	324194.4	1.5
CD.R1	448204	326379.2	1.5
CD.R2	448307.6	326467.3	1.5
CD.R3	448325	326729.3	1.5
CD.R4	448340.4	326725	1.5
CD.R5	448322.8	326740.2	1.5
CD.R6	448330.3	326767	1.5
CD.R7a	448186.9	327124	1.5
CD.R7b	448187.6	327132.6	1.5

Receptor ID	X	Y	Z
CD.R8	448184.1	327035.7	1.5
CD.R9	448708.4	327141.2	1.5
CD.R10	448807.3	327197.1	1.5
CD.R11	449135.9	327219.5	1.5
CD.R12	448761.2	326899.4	1.5
CD.R13	448786.7	326845.3	1.5
CD.R14	448805.8	326701.6	1.5
CD.R15	448809.2	326676.7	1.5
CD.R16	448810.8	326653.4	1.5
CD.R17	448808.5	326598.4	1.5
CD.R18	448800.5	326635.4	1.5
CD.R19	448803.4	326534.4	1.5
CD.R20	448792.1	326526.3	1.5
CD.R21	448798.2	326514.2	1.5
CD.R22	449062.5	325960.4	1.5
CD.R23	449213.5	325329.9	1.5
CD.R24	449977.1	327744.3	1.5
CD.R25	450065.6	327728.7	1.5
CD.R26	450122.4	327709.5	1.5
CD.R27	450357.6	327857.9	1.5
CD.R28	450631.2	328107	1.5
CD.R29	450035.7	326688.6	1.5
CD.R30	450196.8	326683	1.5
CD.R31	450278.5	326647.2	1.5
CD.R32	450336.8	326213.6	1.5
CD.R33	451547.1	326379.3	1.5
CD.R35	452291.3	326140.9	1.5
CD.R36	448266.1	328104	1.5
CD.R37	446024	329446.7	1.5
EF.R1	449858.5	322694.7	1.5

Receptor ID	X	Y	Z
EF.R2	449990.7	322278.2	1.5
EF.R3	450011	322252.5	1.5
EF.R4	450077	322034.8	1.5
EF.R5	450486.1	321764.3	1.5
EF.R6	450199.9	322284.2	1.5
EF.R7	449946	322231.7	1.5
EF.R8	450857.2	321167	1.5
EF.R9	451661.6	321049.8	1.5
EF.R10	452145.2	320814.3	1.5
EF.R11	452159.5	320789.5	1.5
EF.R12	452202.5	320731.7	1.5
EF.R13	452248.4	320735.5	1.5
EF.R14	452317.6	320727.3	1.5
EF.R15	452597.5	320607.5	1.5
EF.R16	450639.4	323469.1	1.5
EF.R17	450742.2	323483.5	1.5
EF.R18	450828.4	323495.8	1.5
EF.R19	451510.3	324062.3	1.5
EF.R20	453143.7	324820.7	1.5
GLN.R1	446680.7	332141.9	1.5
GLN.R2	447278.9	333241	1.5
GLN.R3	447345.2	333671.9	1.5
GLN.R4	447329.4	333773.2	1.5
GLN.R5	447307.9	333993.6	1.5
GLN.R6	447282.9	334116.2	1.5
GLN.R7	447200.9	334563	1.5
GLN.R8	446721.1	334275.6	1.5
GLN.R9	447299.9	331490.8	1.5
GLN.R10	447434.7	331502.4	1.5
GLN.R11	447272.6	335198.6	1.5

Receptor ID	X	Y	Z
GLN.R12	447355.2	335591.2	1.5
GLN.R13	447390	335645.6	1.5
GLN.R14	447533.1	335735.6	1.5
GLN.R15	444104	335260.8	1.5
GLN.R16	447852.1	335899.6	1.5
GLN.R17	447911.4	335900.7	1.5
GLN.R18	447952.6	335931	1.5
GLN.R19	447917.4	335980.2	1.5
GLN.R20	447886.4	335972.5	1.5
GLN.R21	447521.6	335823.3	1.5
GLN.R22	447283.4	335773.4	1.5
GLN.R23	447261.6	335793.1	1.5
GLN.R24	446949.7	335651.1	1.5
GLN.R25	447114.1	336118.8	9.5
GLN.R26	445888.2	335384.2	1.5
GLN.R27	445819.4	335625.5	1.5
GLN.R28	444762.6	335527.5	1.5
GLN.R29	444179.4	335145.5	1.5
GLN.R30	443691.6	334990.4	1.5
GLN.R31	442705.7	334506.8	1.5
GLN.R32	442328.6	334335.4	1.5
GLN.R33	442264.3	334313.8	1.5
GLN.R34	442292.7	334312.5	1.5
GLN.R35	441946.1	335300.9	1.5
GLN.R36	447914.7	336404.9	0
GLN.R37	447982	336380.9	4.5
GLN.R38	448131.6	336368.8	1.5
H.R1	440278.6	331502.7	1.5
H.R2	440242.3	331645.3	1.5
MN.R1	446965.2	323751.9	1.5

Receptor ID	X	Y	Z
MN.R2	447363.9	323697.4	1.5
MN.R3	447385.4	323705.8	1.5
MN.R4	447554.8	323635.8	1.5
MN.R5	447563.7	323653.1	1.5
MN.R6	447567.3	323639.5	1.5
MN.R7	447775	323577.9	1.5
MN.R8	447849.1	323538.4	1.5
MN.R9	447874	323545.5	1.5
MN.R10	447884	323560.5	1.5
MN.R11	447870.4	323511.3	1.5
MN.R12	447887.7	323514.2	1.5
MN.R13	447884.4	323500.6	1.5
MN.R14	447339.3	322923.6	1.5
MN.R15	447389.3	322217	1.5
OP.R1	437636.2	334129.1	1.5
OP.R3	437675.2	334107	1.5
OP.R2	437633.4	334112.5	1.5
OP.R4	437717.2	334075.7	1.5
OP.R5	437831.9	334013.8	1.5
OP.R6	438146.9	333673.8	1.5
OP.R7	438180.5	333635.5	1.5
OP.R8	438565.9	333478.5	1.5
OP.R9	438605.4	333250.2	1.5
OP.R10	438614.8	333563.4	1.5
OP.R11	439582	332430.7	1.5
OP.R12	438905.1	332895.1	1.5
OP.R13	438650.7	333277.8	1.5
OP.R15	438835.1	335515.6	1.5
OP.R16	438838.6	335540.8	1.5
OP.R17	438874.5	335581.4	1.5

Receptor ID	X	Y	Z
OP.R18	439511.1	335628.5	1.5
OP.R19	439592.5	335515.6	1.5
OP.R20	439621.4	335559.5	1.5
OP.R21	439584.5	335647.8	1.5
OP.R22	439795.2	335652	1.5
OP.R23	439741.7	335680.4	1.5
OP.R24	439791.1	335702.1	1.5
OP.R25	440040.1	335671.7	1.5
OP.R26	440080.1	335698.2	1.5
OP.R26	440162.5	335626.2	1.5
OP.R27	440205.4	335650.9	1.5
QR.R1	443973.0	327781.9	1.5
QR.R2	444847.2	327457.2	1.5
QR.R3	444845.5	327450.6	1.5
QR.R4	445093.0	327522.6	1.5
QR.R5	445167.0	327534.4	1.5
QR.R6	444440.9	327226.4	1.5
QR.R7	444513.3	327341.1	1.5
QR.R8	444526.7	327339.6	1.5
QR.R9	444541.7	327385.2	3
QR.R10	444563.5	327392.9	1.5
QR.R11	444550.6	327400.5	4.5
QR.R12	444558.3	327410.0	4.5
QR.R13	444581.0	327413.0	1.5
QR.R14	444588.4	327422.0	1.5
QR.R15	444593.9	327428.7	1.5
QR.R16	444566.0	327416.9	4.5
QR.R17	444570.7	327424.2	4.5
QR.R18	444576.0	327431.6	4.5
QR.R19	444584.0	327435.5	1.5

Receptor ID	X	Y	Z
QR.R20	444650.8	327497.9	1.5
QR.R21	444642.5	327505.2	1.5
QR.R22	444669.1	327534.7	1.5
QR.R23	444673.5	327524.9	1.5
QR.R24	444690.1	327580.3	1.5
QR.R25	444727.4	327719.8	1.5
QR.R26	444782.9	328112.0	1.5
QR.R27	444747.5	327529.4	4.5
QR.R28	444747.0	327737.4	1.5
QR.R29	444663.0	327157.8	1.5
QR.R30	444410.8	327172.7	1.5
QR.R31	444411.2	327147.6	1.5
QR.R32	444390.2	327138.5	1.5
QR.R33	444376.6	327102.5	1.5
QR.R34	444268.9	326920.0	1.5
QR.R35	444281.9	326910.9	1.5
QR.R36	444218.8	326807.1	1.5
QR.R37	444078.1	326522.8	1.5
QR.R38	445376.3	327585.2	1.5
QR.R39	445569.2	327804.4	1.5
QR.R40	445549.3	327897.8	1.5
QR.R41	445549.7	327932.0	1.5
QR.R42	445575.0	328101.6	1.5
QR.R43	446690.8	328066.8	1.5
QR.R44	446701.0	328098.5	1.5
QR.R45	444718.1	327279.3	1.5
QR.R46	444748.3	327326.8	1.5
QR.R47	444768.2	327367.4	1.5
QR.R48	444773.9	327393.1	1.5
QR.R49	444786.5	327410.9	1.5

Receptor ID	X	Y	Z
QR.R50	444795.2	327408.1	1.5
TK.R1	437672.7	317511.5	1.5
TK.R2	438724.2	319268.5	1.5
TK.R3	439626.1	320578.1	1.5
TK.R4	442093.7	321802.9	1.5
TK.R5	440988.5	322367.7	1.5
TK.R6	440805.3	323013.7	1.5
TK.R7	440797	322993.6	1.5
TK.R8	440878.4	322945.3	1.5
U.R1	449717.4	314830.7	1.5
VW.R1a	445157.5	318484.3	1.5
VW.R1b	445158.6	318491.9	1.5
VW.R2	445328.3	318436.2	1.5
VW.R3	445444.5	318486.1	1.5
VW.R4	446397	317965.3	1.5
VW.R5	446425.3	317915.3	1.5
VW.R6	446971.4	317152.1	1.5
VW.R7	448675.5	320144.9	1.5
VW.R8	447568.5	319964.8	1.5
VW.R9	447621.3	319979.8	1.5
VW.R10	447643.2	319972.2	1.5
VW.R11	447629.9	319933.2	1.5
VW.R12	447653	319911.7	1.5
VW.R13	447884.6	319786.3	1.5
VW.R14	447880.2	319772.1	1.5
VW.R15	447869.9	319749.2	1.5
VW.R16	447871.5	319715.4	1.5
VW.R17	447859.5	319709.3	1.5
VW.R18	447861.5	319677.8	1.5
VW.R19	447853	319666.6	1.5

Receptor ID	X	Y	Z
VW.R20	447856.5	319620	1.5
VW.R21	447864.2	319604.8	1.5
VW.R22	447876.2	319608.8	1.5
VW.R23	447953.6	319579.5	1.5
VW.R24	447968.7	319583.4	1.5
VW.R25	447976.9	319557.2	1.5
VW.R26	447972.1	319547.3	1.5
VW.R27	447943.4	319503.9	1.5
VW.R28	447744	319177.8	1.5
VW.R29	447716	319148	1.5
VW.R30	447710.3	319108.4	1.5
VW.R31	447618.8	318839.2	1.5
VW.R32	447655.7	318815.8	1.5
VW.R33	447616.1	318782.8	1.5
VW.R34	448174.6	318256.6	1.5
VW.R35	448877.5	318306.8	1.5
X.R1a	448068.2	312949.4	1.5
X.R1b	448106.6	312938.9	1.5
X.R2	448150.7	312925.5	1.5
X.R3	448152	313006.7	1.5
X.R4	449242	315228.6	1.5
X.R5	448251.2	312511.9	1.5
X.R6	448459.2	311610.3	1.5
YZ.R1	444667.8	320978.8	1.5
YZ.R2	444702.5	320906.2	1.5
YZ.R3	444699.5	320872.4	1.5
YZ.R4	444673.4	320815.6	1.5
YZ.R5	444667.6	320761.9	1.5
YZ.R6	444601.4	320505.8	1.5
YZ.R7	444583.5	320435.5	1.5

Receptor ID	X	Y	Z
YZ.R8	444568.1	320414.2	1.5
YZ.R9	444697.1	320819.4	1.5
YZ.R10	443525.5	318611.1	1.5
YZ.R11	443076.3	318132.5	1.5
YZ.R12	443044	318115.6	1.5
YZ.R13	445893.1	315548.9	1.5
YZ.R14	446590.9	316304	1.5
YZ.R15	446869.1	316533.4	1.5
YZ.R16	441547	320204.9	1.5
YZ.R17	441396.5	319100.8	1.5
YZ.R18	441394.4	318779.8	1.5
YZ.R19	441342.8	318401.6	1.5
YZ.R20	441408.2	318207	1.5
YZ.R21	441264	317656.3	1.5
YZ.R22	441350.8	317477	1.5
YZ.R23	441502.5	317511.1	1.5
YZ.R24	441528.5	316929.6	1.5
YZ.R25	441604.3	316816.3	1.5
YZ.R26	443242.8	316381.6	1.5
YZ.R27	443304.3	316330.7	1.5
YZ.R28	443374.6	316269.8	1.5
YZ.R29	443535.5	316098.6	1.5
YZ.R30	443607.8	316054.1	1.5
YZ.R31	443610	315999.5	1.5
YZ.R32	443650.9	315999.8	1.5
YZ.R33	443690.4	315953.7	1.5
YZ.R34	443648.7	316020.7	1.5
YZ.R35	443622.7	315998.9	1.5

**Table 8c.2: School Receptor Locations**

Receptor ID	X	Y	Z
AB.S1	445314.5	324720.4	0.8
CD.S1	448479.5	326695.8	0.8
QR.S1	444675.8	327197.9	0.8
QR.S2	445585.9	328082.2	0.8
VW.S1	447680.2	319044.8	0.6
YZ.S1	441396.6	318562.8	0.8

**Table 8c.3: Care Home Receptor Locations**

Receptor ID	X	Y	Z
OP.CH1	438622.6	333324	1.5
OP.CH2	438944.9	332895.7	1.5
QR.CH1	444607.9	327161.2	1.5

**Table 8c.4: Medical Receptor Locations**

Receptor ID	X	Y	Z
OP.MC1	438280.2	333564	1.5
VW.MC1	447904.2	319589.2	1.5
YZ.MC.1	444672.1	320859.7	1.5

Figure 8c.1: Modelled Receptor Locations – Disworth

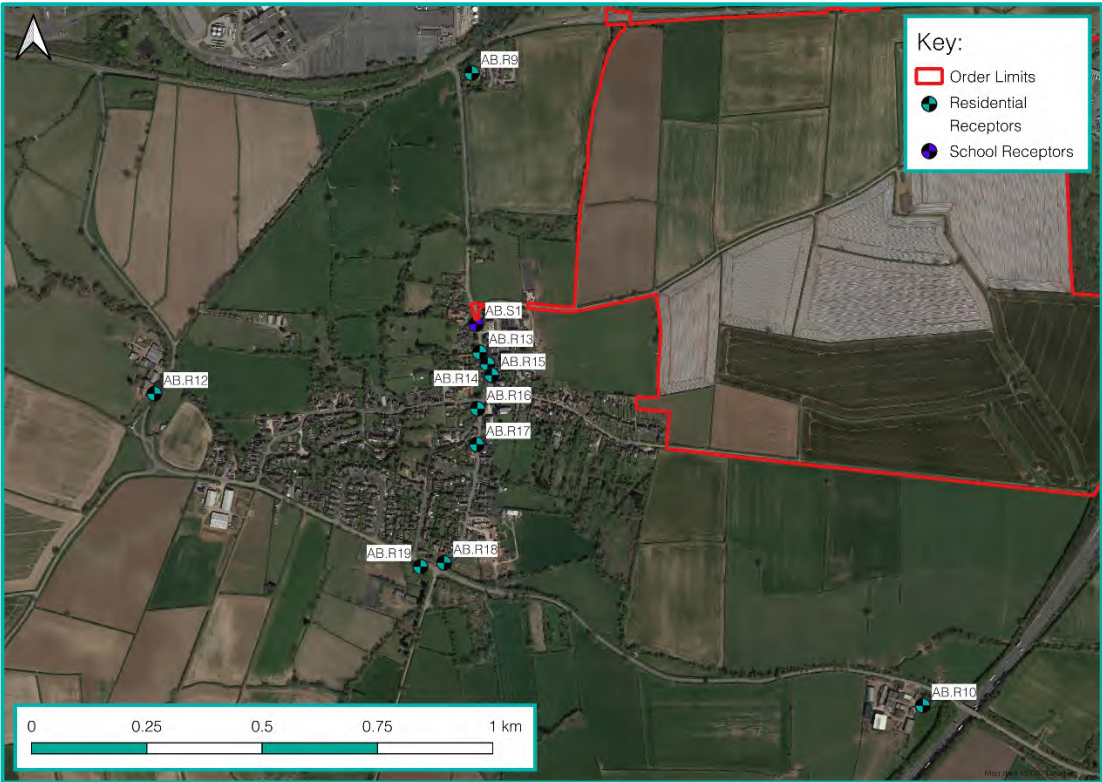


Figure 8c.2: Modelled Receptor Locations – Isley Walton



Figure 8c.3: Modelled Receptor Locations – Kingston on Soar



Figure 8c.4: Modelled Receptor Locations – Derby Southern Bypass / A453



Figure 8c.5: Modelled Receptor Locations – Kegworth



Figure 8c.6: Modelled Receptor Locations – Hathern / Zouch



Figure 8c.7: Modelled Receptor Locations – Loughborough



Figure 8c.8: Modelled Receptor Locations – Sandiacre / Risley



Figure 8c.9: Modelled Receptor Locations – Long Eaton



Figure 8c.10: Modelled Receptor Locations – Borrowash



Figure 8c.11: Modelled Receptor Locations – Boulton Moor, Alvaston



Figure 8c.12: Modelled Receptor Locations – Long Whatton



Figure 8c.13: Modelled Receptor Locations – Smythy Lane, Long Whatton



Figure 8c.14: Modelled Receptor Locations – Spondon



Figure 8c.15: Modelled Receptor Locations – Alvaston

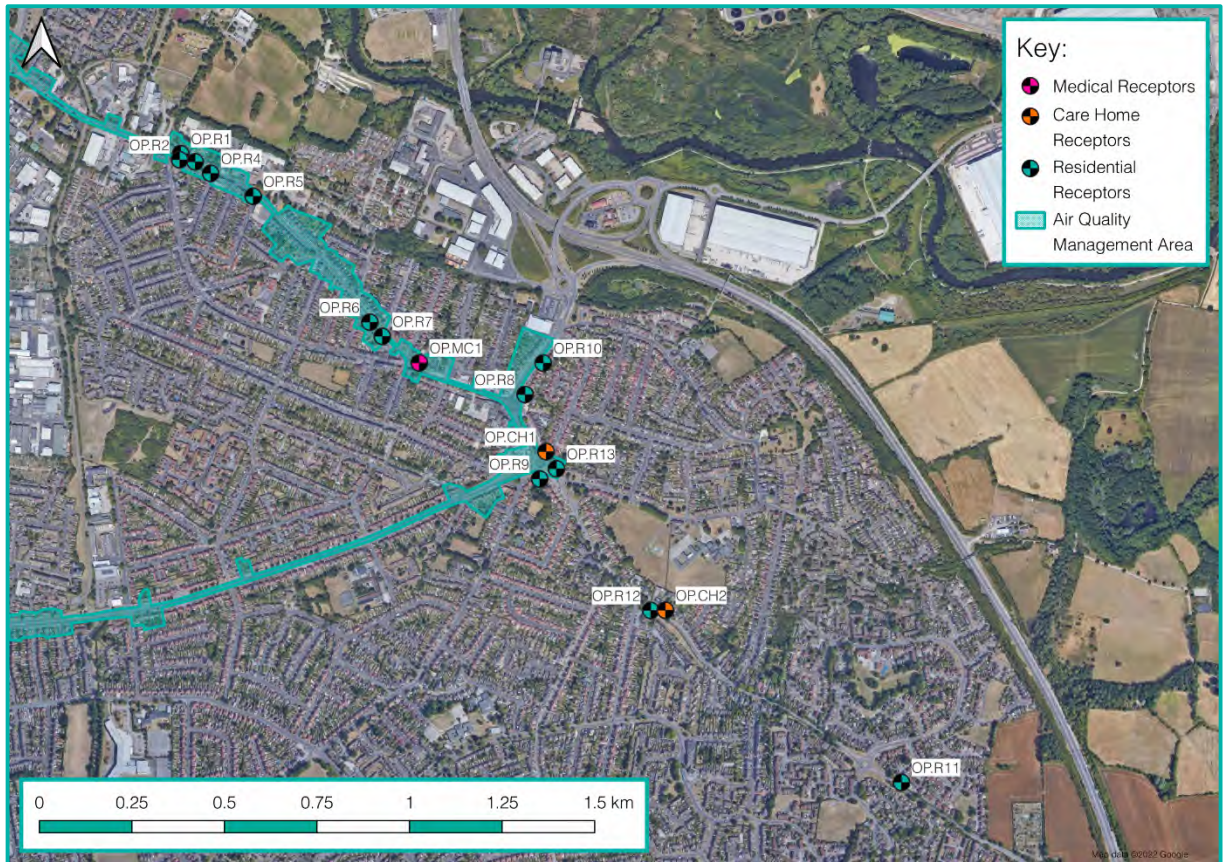


Figure 8c.16: Modelled Receptor Locations – Hemington



Figure 8c.17: Modelled Receptor Locations – Lockington



Figure 8c.18: Modelled Receptor Locations – Castle Donington Central



Figure 8c.19: Modelled Receptor Locations – Castle Donington South



Figure 8c.20: Modelled Receptor Locations – Castle Donington North



Figure 8c.21: Modelled Receptor Locations – Breedon on the Hill



Figure 8c.22: Modelled Receptor Locations – Woodhouse Eaves



Figure 8c.23: Modelled Receptor Locations – Northeast Shepshed



Figure 8c.24: Modelled Receptor Locations – Northwest Shephed



Figure 8c.25: Modelled Receptor Locations – Shephed Town Centre



Figure 8c.26: Modelled Receptor Locations – Charnwood Road, Shepshed



Figure 8c.27: Modelled Receptor Locations – Ashby Road East, Shepshed



Figure 8c.28: Modelled Receptor Locations – Blackbrook / Finney Hill



Figure 8c.29: Modelled Receptor Locations – Nanpantan



Figure 8c.30: Modelled Receptor Locations – Copt Oak



Figure 8c.31: Modelled Receptor Locations – Belton



Figure 8c.32: Modelled Receptor Locations – Thringstone / Griffydam / Worthington



Figure 8c.33: Modelled Receptor Locations – Peggs Green / Swannington



Figure 8c.34: Modelled Receptor Locations – Whitwick



Figure 8c.35: Modelled Receptor Locations – Abbey Road, Coalville



Table 8c.5: Indicative Future Receptor Locations

Receptor ID	X	Y	Z
ABS.C1	445783.3	325351.8	1.5
ABS.C2	446022.9	325353.4	1.5
ABS.C3	446164.8	325376.4	1.5
ABS.C4	446299.5	325377.2	1.5
ABS.C5	446508.6	325401.1	1.5
ABS.C6	446660.4	325405	1.5
ABS.C7	446661.6	324500.1	1.5
ABS.C8	446678.3	324676.9	1.5

Figure 8c.36: Modelled Indicative Future Commercial Receptor Locations



Table 8c.6: Equality Receptor Locations

Receptor ID	X	Y	Z
OS1	445323.8	324400.8	1.5
OS10	445361.4	324536.5	1.5
OS13	445303	324677.5	1.5
OS2	444976.7	327509.6	1.5
OS3	444712.8	327451	1.5
OS4	444677.7	327298.4	1.5
OS6	444640.6	327148.7	1.5
OS7	444697	327452.9	1.5
OS11	444701.1	327202.3	1.5
OS12	444616.4	327296.1	1.5
OS14	444784.4	327515.8	1.5
LCC3	446726.3	330281.2	1.5

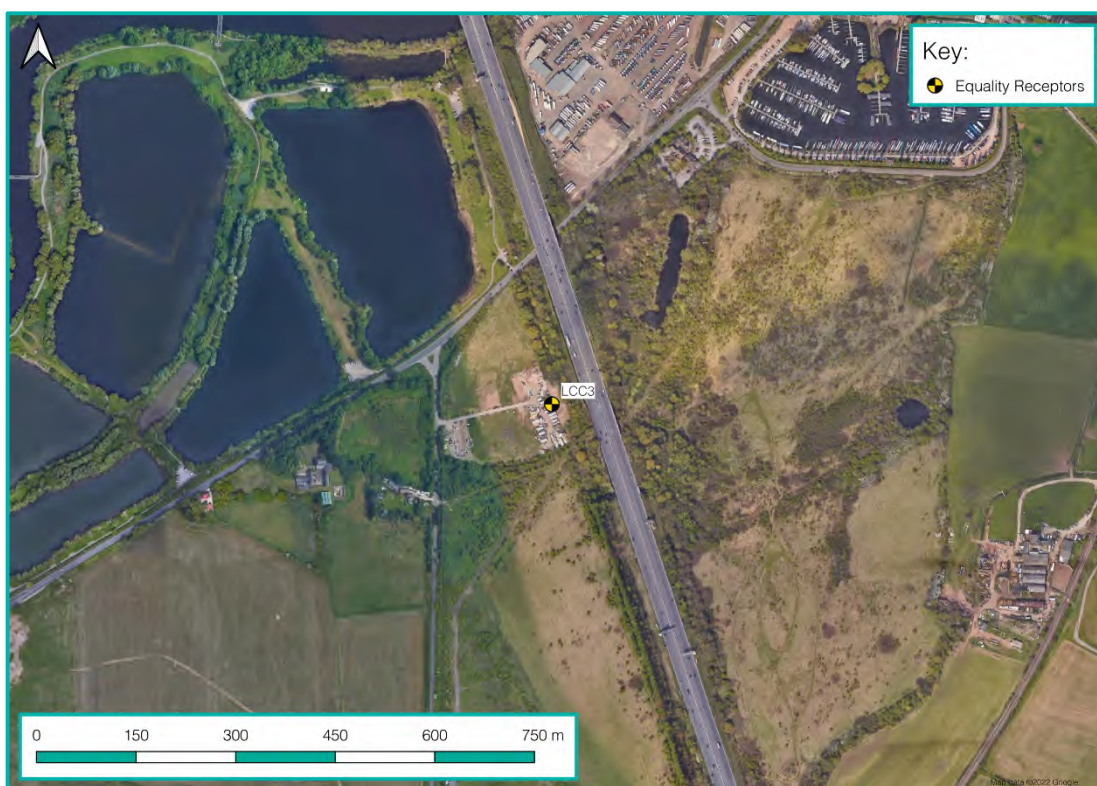
Figure 8c.37: Modelled Equality Receptor Locations – Diseworth



Figure 8c.38: Modelled Equality Receptor Locations – Castle Donington



Figure 8c.39: Modelled Equality Receptor Locations – Sawley



An overview of the study area as a whole, with the areas, labelled in line with the receptor prefixes found in the above tables, is illustrated in Figure 8c.40. To note, the Order Limits are not shown on this image for ease of viewing. This figure also labels key places within the study area.

Figure 8c.40: Study Area

